

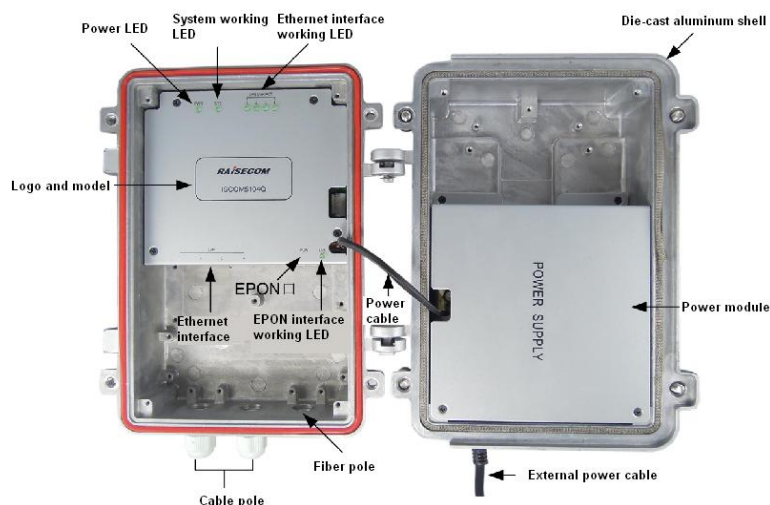


## ISCOM5104Q-EA EPON ONU

### ▼ Introduction

The ISCOM5104Q-EA is designed for the outdoor environment. It provides 4 FE interfaces and 1 EPON uplink interface and adopts a die-cast aluminum shell which features sound airtightness and heat dissipation, thus suitable for harsh outdoor environment.

It is applicable to the PON+LAN/PON+EoC networking and provides customers with bandwidth access or the bidirectional transformation access of the radio and television network. It can be deployed in the corridor, outdoor wall, and telegraph pole.



**ISCOM5104Q-EA**

### ▼ Features

#### ◆ A design for outdoor environment

- It adopts a die-cast aluminum shell which features sound airtightness and heat dissipation.
- Its working temperature ranges from -30 to 75 °C, thus applicable to all regions across the country.
- Its dustproof and water proof level are IP65. Therefore, it can work normally under rainy, snowy, and frozen whether.
- Its anti-thunder level reaches to common mode  $\pm 6$  KV. Therefore, it can work normally in thunder-stricken areas.
- It supports being installed by hanging in a pole or steel cable, which facilitates outdoor construction.
- It supports multiple power supplies (220 VAC, 60 VAC, -48 VDC, 24 VDC, and 12 VDC), thus can be widely used.
- It supports 60 VAC coaxial power supply, SC/APC optical interface, thus meeting the special requirements of radio and television market.



- ◆ **Abundant service features, fully meeting application requirements**
  - It complies with the YD/T 1475-2006 technical requirements of access network and supports China Telecom CTC2.1 specifications.
  - It supports 4 VLAN modes (transparent, Tag, Trunk, and mapping), 3 multicast modes (transparent transmission, IGMP Snooping, CTC controllable multicast), which facilitates carrying out the broadband and Video on Demand (VOD) services.
- ◆ **Uniform network management and easy operation and maintenance**
  - It supports multiple management modes (Telnet, Web, SNMP, and OAM) to facilitate management and maintenance.
  - It supports device discovery (SNMP) to facilitate managing downstream devices in the PON+LAN/PON+EoC networking.
  - It supports batch configuration, template-based configuration, offline configuration, and plug and play of ONUs, to facilitate service activation.
  - It supports reporting various alarms (Dying Gasp, optical link DDM, loop, etc.) to facilitate locating and clearing faults.



▼ Specifications

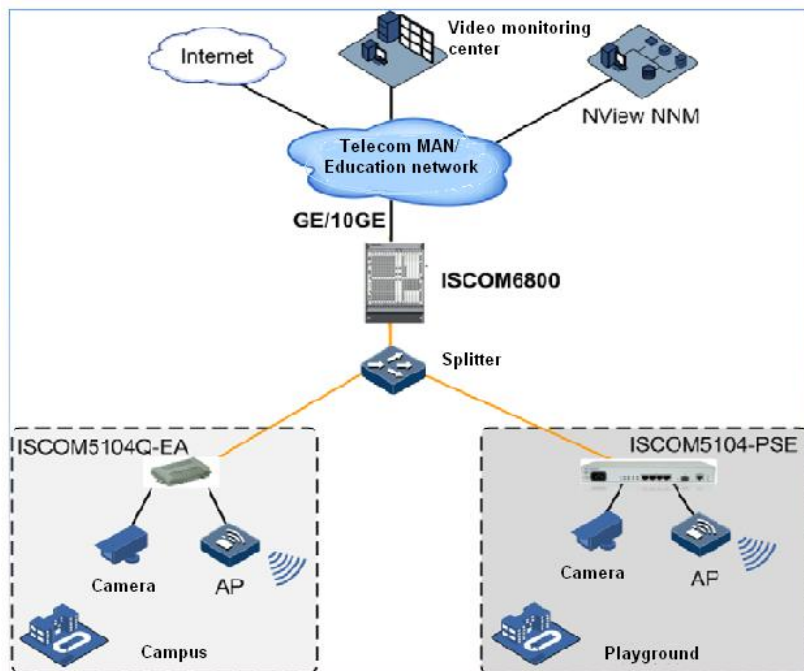
<b>Hardware features</b>	
Dimensions	250 mm (Length) × 160 mm (Width) × 115 mm (Height)
Weight	About 2.5 kg
Power supply	<ul style="list-style-type: none"> <li>● 220 VAC: 100240 VAC</li> <li>● 60 VAC: 3585 VAC</li> <li>● 48 VDC: -36 to -72 VDC</li> <li>● 24 VDC: 1836 VDC</li> <li>● 12 VDC: 1118 VDC</li> </ul>
Power consumption	≤ 10 W
Operating environment	<ul style="list-style-type: none"> <li>● Operating temperature: -30 to 75 °C</li> <li>● Humidity: 5%–95% (non-condensing)</li> </ul>
Storage environment	<ul style="list-style-type: none"> <li>● Storage temperature: -40 to 75 °C</li> <li>● Humidity: 5%–95% (non-condensing)</li> </ul>
<b>Software features</b>	
PON features	<ul style="list-style-type: none"> <li>● Support 128 bit AES and triple churning encryption.</li> <li>● Support optical link DDM and shutting down the Tx power of the optical module.</li> </ul>
Switching	<ul style="list-style-type: none"> <li>● Support rate limiting on the interface.</li> <li>● Support 1 K MAC address capacity.</li> <li>● Support 4094 VLANs ranging from VLAN 1 to VLAN 4094.</li> <li>● Support configuring VLAN mode to transparent transmission, Tag, Trunk, and VLAN mapping.</li> <li>● Support configuring VLAN stacking (QinQ).</li> <li>● Support interface loop detection between two UNIs on an ONU or UNIs on different ONUs.</li> <li>● Support discovering and managing partner devices and support querying SNMP configurations.</li> <li>● Support port mirroring.</li> </ul>



	<ul style="list-style-type: none"> <li>● Support PPPoE relay.</li> <li>● Support DHCP Snooping and DHCP relay.</li> <li>● Support dynamic ARP detection.</li> </ul>
QoS & ACL	<ul style="list-style-type: none"> <li>● Support 4 priority queues.</li> <li>● Support SP, WRR, and SP+WRR scheduling algorithms and support configuring the queue weight.</li> <li>● Support traffic classification, priority mapping, and filtering rules based on Layer 2, Layer 3, and Layer 4.</li> </ul>
Multicast	<ul style="list-style-type: none"> <li>● Support multicast transparent transmission, IGMP Snooping, and CTC controllable multicast modes.</li> <li>● The multicast address table has a capacity of 128.</li> </ul>
<b>Interface indexes</b>	
EPON interface	<ul style="list-style-type: none"> <li>● Interface type: SC/PC</li> <li>● Transmission rate: 1.25 Gbit/s</li> <li>● Central wavelength: 1310 nm in Tx and 1490 nm in Rx</li> <li>● Tx optical power: -1 to 4 dBm</li> <li>● Maximum Rx sensitivity: -27 dBm</li> <li>● Overload optical power: -3 dBm</li> </ul>
FE interface	<ul style="list-style-type: none"> <li>● Interface type: RJ45</li> <li>● Transmission rate: 10/100 Mbit/s auto-negotiation</li> <li>● Duplex mode: full/half mode auto-negotiation</li> </ul>



▼ Typical applications



**Introduction**

- The OLT is deployed downlink to save the ODN. The ISCOM6800 is used to facilitate convergence of data and voice services. At the ONU side, the industrial ONU is used to connect the IP camera/AP. For scenarios without the splice box and are difficult to have electricity, the POE-type ONU can be used to supply power to the AP/IP camera, thus implementing the wireless broadband/video monitoring services.

**Applied scenario**

- With large coverage, it is suitable for outdoor environment with sparse population, high population mobility, and cabling difficulty to meet the requirements of broadband/video monitoring services.

**Advantages**

- High density, high broadband, and multi-service carrier
- It is an outdoor ONU with industrial features, which supports derrick and wall-mount installation.

Ordering information

Model	Description
ISCOM5104Q-EA-AC	EPON uplink(SC/PC),outdoor shell 4*FE OUN, single 220 VAC power.